

■ NIZAMIYE MOSQUE GALLERY

DESIGNED BY MUJAAHID BULBULIA | MBRACE SPACE



ISLAMIC CIVILISATION
A LEGACY OF FAITH,
ART & ARCHITECTURE

From the intricate geometry of
mosques to the timeless beauty
of Islamic calligraphy, explore
a civilisation that has inspired
the world for centuries.

TOUCH TO EXPLORE



NIZAMIYE MOSQUE GALLERY



LIMEWASH PLASTER
Walls

CARVED TEXTURED WALL
Feature Walls

NATURAL WOOD
Doors, Panels, Furniture

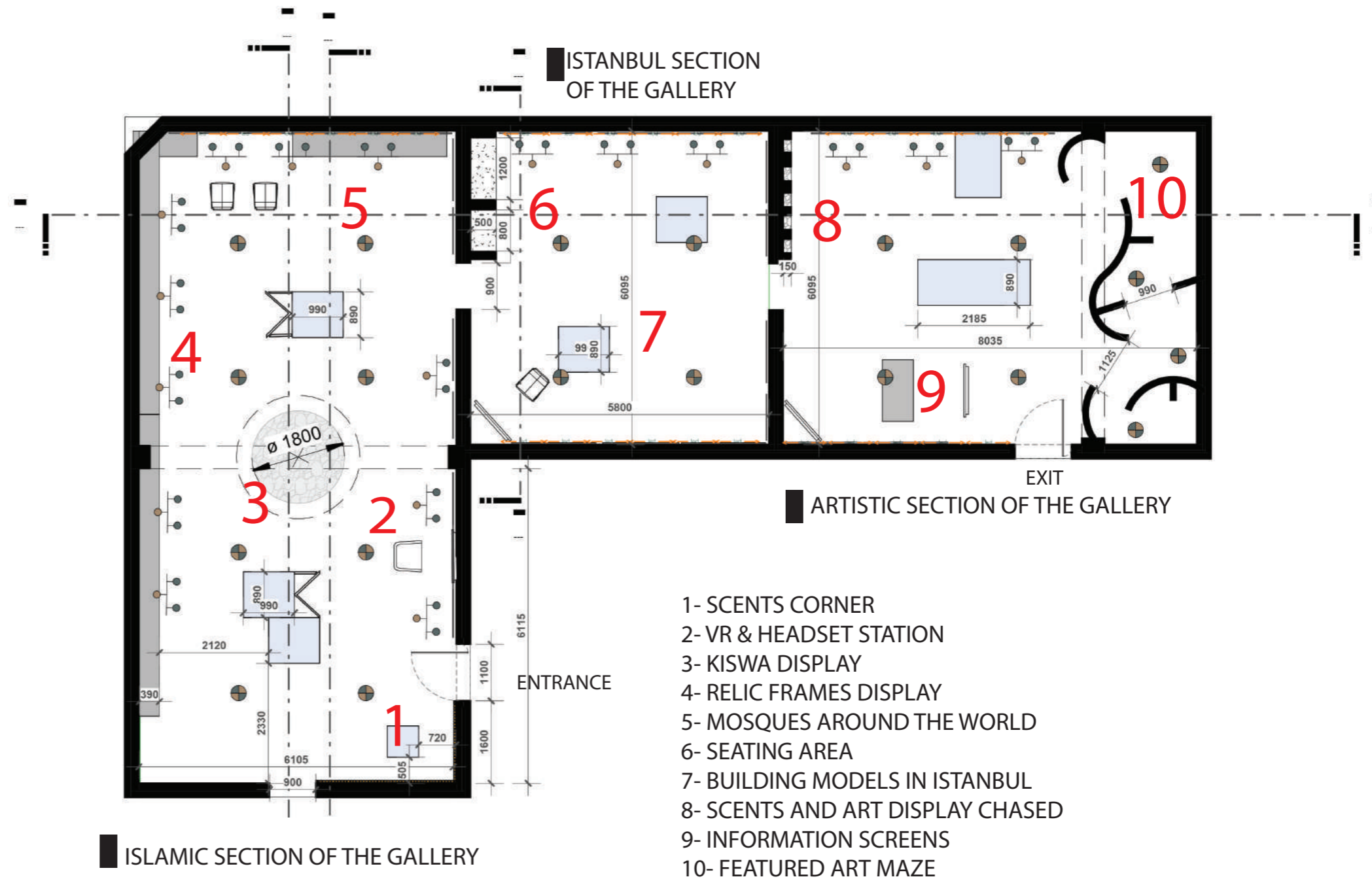
BRONZE METAL
Structural Elements, Frames

BRASS ACCENTS
Trim, Frames, Details

NATURAL STONE
Floors, Pedestals, Wall Bases

WARM LIGHTING
Accent & Ambient Lighting

CLEAR GLASS
Display Cases, Partitions



ISLAMIC SECTION OF THE GALLERY

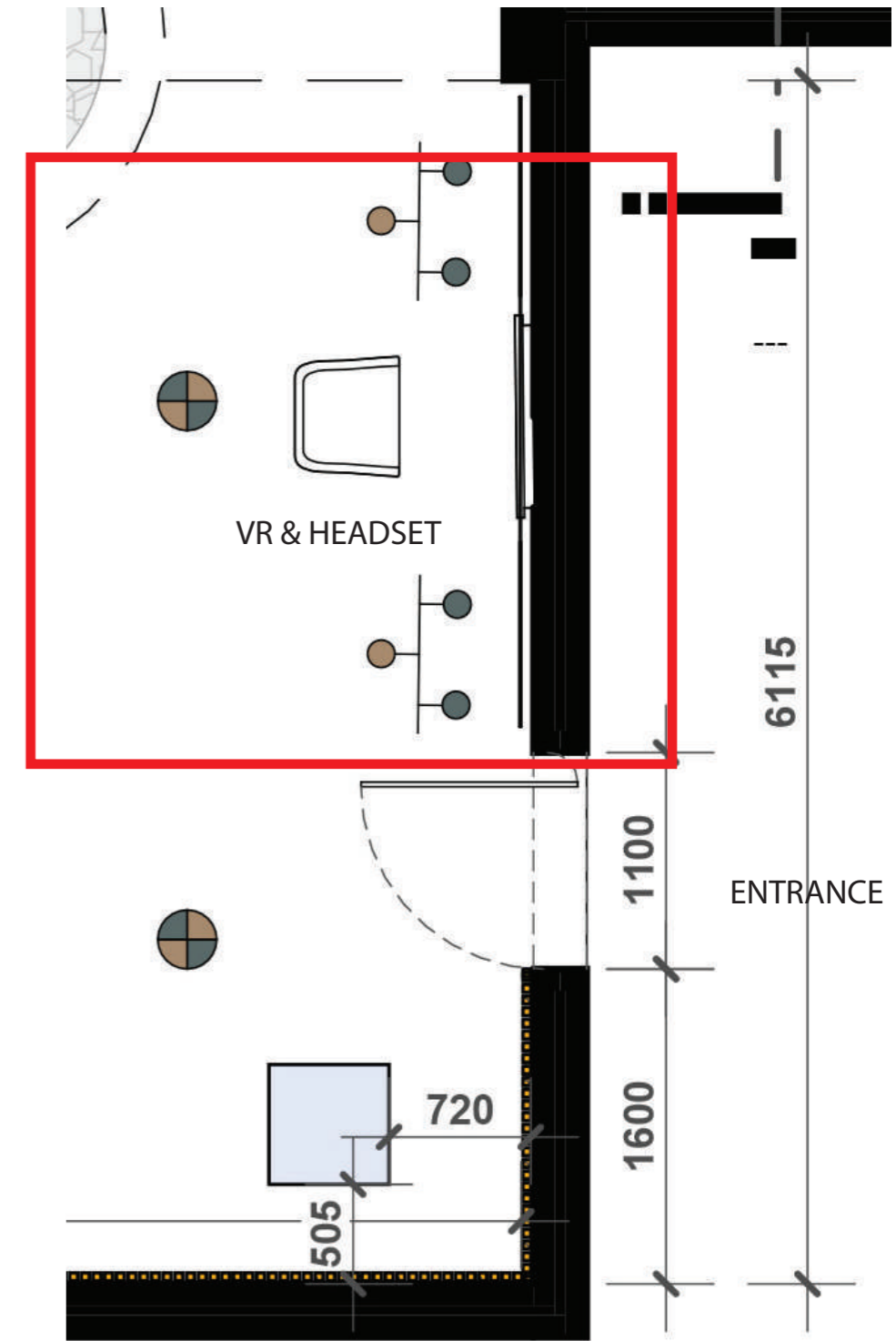
- 1- SCENTS CORNER
- 2- VR & HEADSET STATION
- 3- KISWA DISPLAY
- 4- RELIC FRAMES DISPLAY
- 5- MOSQUES AROUND THE WORLD
- 6- SEATING AREA
- 7- BUILDING MODELS IN ISTANBUL
- 8- SCENTS AND ART DISPLAY CHASED
- 9- INFORMATION SCREENS
- 10- FEATURED ART MAZE

NIZAMIYE GALLERY FLOOR PLAN LAYOUT

ISLAMIC HISTORY SECTION R1

VR & HEADSET - ISLAMIC HISTORY AND KNOWLEDGE

ATHANS FROM AROUND THE WORLD, AND VR THROUGH THE STREETS OF MECCA 1400 YEARS AGO



FEATURE WALL

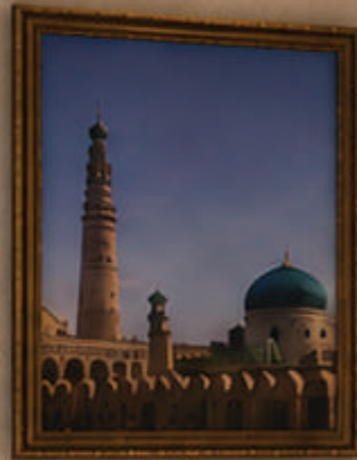


ISLAMIC ARCHITECTURE A LEGACY ACROSS CONTINENTS

From the intricate tilework of Samarra to the soaring minarets of Cairo, Islamic architecture reflects a rich cultural heritage that spans continents and centuries.

Explore how faith, art, and innovation came together to shape iconic landmarks that continue to inspire the world.

TOUCH TO EXPLORE



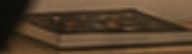
Islamic Architecture
A Legacy Across Continents

Discover the architectural marvels of the Islamic world, from the intricate tilework of Samarra to the soaring minarets of Cairo. Explore the rich cultural heritage that spans continents and centuries.



Islamic Architecture
A Legacy Across Continents

Discover the architectural marvels of the Islamic world, from the intricate tilework of Samarra to the soaring minarets of Cairo. Explore the rich cultural heritage that spans continents and centuries.



İSTANBUL

The City of Two Continents

The ancient city of Istanbul, the largest city in the world, is a unique blend of European and Asian architecture and culture. It is a city of two continents, two cultures, and two worlds. The city is a living museum, where the past and the present coexist. The city is a city of contrasts, where the old and the new meet. The city is a city of beauty, where the architecture and the nature are in perfect harmony. The city is a city of history, where the past is always present. The city is a city of dreams, where the future is always within reach.

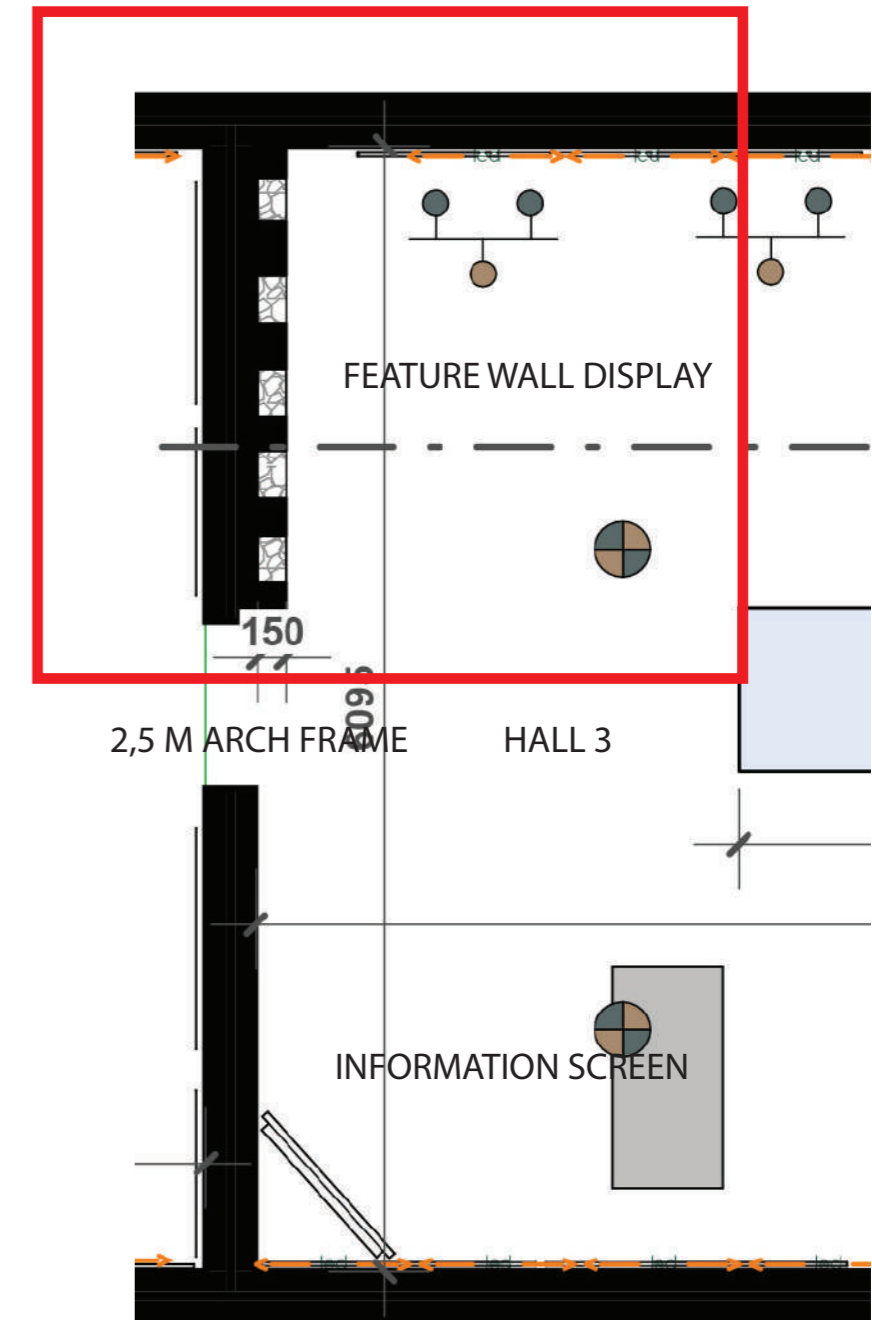




DISPLAY FEATURE

SCENTS, ARTIFACTS & SCULPTURE DISPLAY

DISPLAY OF TRADITIONAL TURKISH ARTIFACTS, SMELLS AND POTTERY IN A CHASED TEXTURED WALL . LED LIGHTS PRONOUNCE DISPLAYED ITEMS
DEPTH 150MM





ISLAMIC ART & ARCHITECTURE

TOUCH TO EXPLORE



TURKISH CALLIGRAPHY ART MAZE

EXPRESSING ART THROUGH MOVEMENT

MAIN ATTRACTION SPACE IN HALL 3 THAT ENGAGES THE VIEWERS
A PICTURE PERFECT LOCATION FOR PHOTOSHOOTS

